

© RUT Printer and Publisher

Print & Online, Open Access, Research Journal Available on <http://jbsd.in>

ISSN: 2229-3469 (Print); ISSN: 2231-024X (Online)

Research Article



Exploration of Tural hot water spring for thermostable Lipase producer

Anupama Pathak*, Sandeep Potulwar, Mayuri Sarsar, Ramdas Bhong, Sonali Girdhari, Vikas Joshi

School of Life Sciences (DST, FIST & UGC- SAP Sponsored),
Swami Ramanand Teerth Marathwada University, Nanded. 431606

*Email: anupama.micro@rediffmail.com

Article Info

Received: 10-03-2018,

Revised: 16-04-2018,

Accepted: 30-05-2018

Keywords:

Hot water spring, Lipase,
Thermophiles.

Abstract

Two thermophilic bacteria were isolated from Tural hot water spring, located at Sangmeshwar tehsil of Ratnagiri district in Maharashtra, India. Of these, one efficient lipase producing Gram positive rod shaped, motile bacterium was selected and designated as G2. The isolate was identified as *Bacillus species* on the basis of cultural, microscopic and biochemical characters. It showed optimum growth on nutrients agar medium at pH 7 and temperature 60°C.

INTRODUCTION

Lipases are prevalent enzymes produced by all biological systems, viz. animals, plants and microorganisms. Microorganisms produce wide spectrum of lipases that differ in their enzymatic characteristics such as substrate specificity, pH, temperature activity and stability profile (Anurag Sekhon *et al.*, 2006). Lipases must be reasonably thermostable and active in organic solvents if they are to be used in wide range of synthetic reactions. Thermostability is important for resistance towards the chemical modifications caused by the high temperatures employed in various industrial lipase-catalyzed reactions (Fairolniza Mohd *et al.*, 2011). Lipases constitute the most important group of biocatalysts for the synthesis of biopolymers and biodiesel, synthesis of fine chemicals, the production of enantiopure pharmaceuticals, and are also important in the dairy industry, in detergents and in paper manufacturing. Thermostable lipase producers therefore have their wide application in industrial uses, such as digestive aids, food additives for flavor, reagents for the synthesis of useful compounds and treatment of domestic sewage (Sharma *et al.*, 2009, Pathak *et al.*, 2016). Present investigation is therefore aimed at

Exploration of Tural hot water spring for isolation of thermostable lipase producer.

MATERIALS AND METHODS

Sample collection

Water sample was collected by grab sample collection method from Tural hot water spring, located at Sangmeshwar tehsil of Ratnagiri district in Maharashtra. Samples were collected in clean, presterilized plastic bottles without any air bubble and transported in laboratory within 24 hours and maintained in refrigerator at 4°C. The temperature and pH of the samples were measured while sample collection with standard digital thermometer and pH meter respectively. (Pathak *et al.*, 2016)

Isolation

Water sample was serially diluted and spreaded on nutrient agar plates. The plates were incubated for 24 hours at 60°C. After incubation morphologically different colonies appeared on the medium were selected for further screening. (Sonalkar *et al.*, 2015, Khairnar *et al.*, 2012)

Screening of isolates for lipolytic activity

Lipase producing organisms were screened by qualitative plate assay method. Isolates were grown on Tributyrin agar plates containing 0.5% (w/v)

peptone, 0.3% (w/v) yeast extract, 1% (v/v) Tributyrin and 2% agar having pH 7.0 and incubated at 60°C for 2 days. After incubation

and biochemical characteristics of the isolate was studied for the identification of the isolate (Khairnar *et al.*, 2012, Pathak *et al.*, 2016)

| Characters | Observed Character |
|--------------|--------------------|
| Size | 4mm |
| Shape | Circular |
| Color | White |
| Margin | Undulate |
| Surface | Smooth |
| Elevation | Semi Raised |
| Consistency | Sticky |
| Opacity | Opaque |
| Grams Nature | +ve, rod |
| Motility | Motile |

plates were observed for zone of clearance around colonies due to hydrolysis of tributyrin. (Malihe *et al.*, 2012, Pathak *et al.*, 2016)

Culturing and Characterization of the Isolates

The isolate showing remarkable zone of clearance was selected for further analysis. Morphological

RESULTS AND DISCUSSION:

The hot spring water was odorless. The temperature and pH at the time of sample collection was recorded as 65°C and 7.6 respectively. Incubated plates showed various colonies in the range of 1 to 5 mm large in size. Four morphologically distinct colonies were selected and designated as G1 G2, G3 and G4. Out of these two isolates G1 and G2 showed zone of clearance on Tributyrin agar plates. Further fast growing opaque, white colony of G2 was selected for next processes. Selected isolate showed a remarkable zone of clearance on Tributyrin agar plates and was identified by microscopic feature, cultural characteristics, biochemical tests and sugar profile as shown in table 1 and table 2 respectively. The selected isolate was identified as *Bacillus* species by comparing with Bergey's Manual of systemic bacteriology volume.

| Test | Result | Enzyme profile | Result | Sugar profile | Result |
|---------------------|--------|----------------|--------|---------------|--------|
| Catalase | + | Amylase | + | Glucose | + |
| Indole production | = | Urease | + | Ribose | + |
| Methyl red | + | Lipase | + | Maltose | + |
| VP | = | Cellulase | = | Lactose | + |
| Citrate utilization | = | Pectinase | = | Sucrose | + |
| Asculin Hydrolysis | = | Laccase | = | Xylose | = |
| Nitrate Reduction | = | Oxidase | = | Fructose | = |

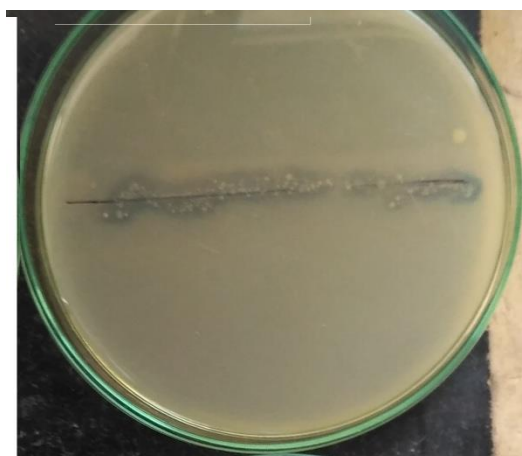


Fig. 1 Tributyrin Hydrolysis test of G2

An efficient lipase producer was isolated from Tural hot water spring and identified as *Bacillus* species. As lipase production by G2 was carried out at high temperature, it can be used in different industries, where lipolytic process is carried out at high temperature.

ACKNOWLEDGEMENT

Authors are thankful to the Honorable Vice-Chancellor, Dr. P. B. Vidyasagar, S.R.T.M. University, Nanded, Maharashtra, India, for providing infrastructure and necessary facilities.

REFERENCES

Gupta VK, 2012. Screening, isolation and production of lipase/esterase producing *Bacillus* sp. strain DVL2 and its potential evaluation in esterification and resolution reactions, *Archives of Applied Science Research*, **4** (4):1763-1770.

Khairnar RS, Mahabole MP, & Pathak AP, 2012. Nanoactivator mediated modifications in thermostable amylase from *Bacillus licheniformis*. *Indian J Biochem Biophys*. **4** (4):751-754.

Lee DW, Koh YS, Kim KJ, 1999. Isolation and characterization of a thermophilic lipase from *Bacillus thermoleovorans* ID-1, *FEMS Microbiol. Lett.* **179**:393-400.

Malihe M, Raja N, Zaliha R, Abu B, Mahiran B, 2013. A new thermostable and organic solvent-tolerant lipase from *Aneurinibacillus thermoaerophilus* strain HZ, *Process Biochemistry* **48**:169-175.

Mamura S and Kitauras, 2000. Purification and characterization of a monoglyceryl lipase from the moderately thermophilic *Bacillus* sp. H-257, *J. Biochem.*, **127**, :419-425.

Mohd Shariff F, Raja Noor Zaliha Raja Abd. Rahman, Basri M and Salleh AB, 2011. A Newly Isolated Thermostable Lipase from *Bacillus* sp., *Int. J. Mol. Sci.*, **12**: 2917-2934.

Pathak AP, Sarsar MS, Jadhav SR, Kamble GT, 2016. Extraction, purification and characterization of thermostable Lipase from *Thermus Spp.*:an industrial effluent isolate, *IJARR*, **1**(4):109-113.

Pathak AP, Kamble GT, Jadhav SR, Sarsar MS, 2015. Isolation and biochemical Characterization of

potential thermostable Lipase producer from industrial effluent of oil, dairy and paper industry, *IJAPBC*, **4**(4): 825-828.

Pathak AP & Rathod MG, 2016, Assessment of diverse thermostable alkaline lipase producers from Unkeshwar hot spring of Maharashtra, India. *Concept. Pure Appl. Sci.* **3**(1):1-9.

Polkade AV, Ramana VV, Joshi AA, Pardeshi L & Shouche YS, 2015. *Rufibacter immobilis* sp. nov., a novel strain isolated from high altitude saline Lake, *Int. J. Syst. Evol. Microbiol.*, 651592-1597.

Rathod MG, & Pathak AP, 2014. Wealth from waste: Optimized alkaline protease production from agro-industrial residues by *Bacillus alcalophilus* LW8 and its biotechnological applications. *J. Taibah Univ. Sci.*, **8**(4):307-314.

Sekhon A, Dahiya N, Tewari RP, Hoondal GS, 2006. Production of extracellular Lipase by *Bacillus megaterium* AKG-1in submerged fermentation, *Indian J. of Biotechnology*, **5**:179-183.

Sharma B, Agrawal R, Singhania R R, Satlewal A, Mathur A, Tuli D & Adsul M, 2015. Untreated wheat straw: Potential source for diverse cellulolytic enzyme secretion by *Penicillium janthinellum* EMS-UV-8 mutant. *Bioresour. Technol.*, **196**:518-524.

Sharma R, Chisti Y, Banerjee UC, 2004. Production, purification, characterization and applications of lipases, *Biotechnology Advances*, **19**:627-662.

Sharma A, Shouche YS, Kumar B & Kulkarni G, 2009. Characterization and identification of *Geobacillus* spp. isolated from Soldhar hot spring site of Garhwal Himalaya, India, *J. Basic Microbiol.*, 49187-194.

Sirisha E, Rajasekar N and Lakshmi Narasu M, 2010. Isolation and Optimization of Lipase Producing Bacteria from Oil Contaminated Soils. *Advances in Biological Research* **4** (5): 249-252.

Sonalkar VV, Mawlankar R, Ramana VV, Joseph N, Shouche YS, & Dastager SG, 2015. *Bacillus filamentosus* sp. nov., isolated from sediment sample. *Antonie van Leeuwenhoek*, **107**(2):433-441.

How to cite this article

Anupama Pathak, Sandeep Potulwar, Mayuri Sarsar, Ramdas Bhong, Sonali Girdhari, Vikas Joshi, 2018. Exploration of Tural hot water spring for thermostable Lipase producer. *Bioscience Discovery*, **9**(3):424-426.